



Private Sewer Lateral Program

**(New Rebates, Inspections, and
Offset Requirements)**



City Wastewater Collection System

The City's wastewater collection system includes 137 miles of gravity sewer mains, 2,900 manholes, eight lift stations, and three miles of force main.

The collection system has nearly 18 miles of pipe that are more than 75 years old. The oldest pipes exceed 100 years of age.



City Wastewater Collection System

Since 2007, the City has invested approximately \$30 million* in upgrades to the collection system to replace aged sewer lines and lift stations



*Includes approved construction



City Wastewater Collection System

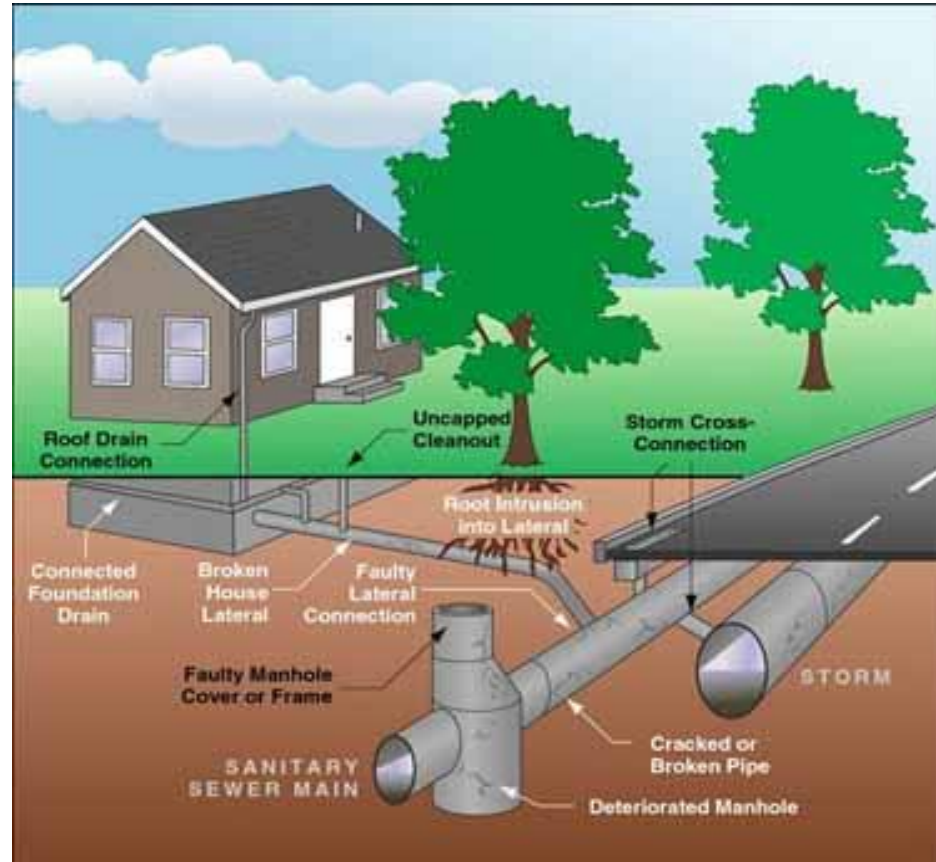
The City also invests approximately \$1.3 million annually on collection system maintenance. This includes lift station maintenance, hydro-cleaning and closed-circuit television inspection of City sewer mains, and construction repairs.



What is Inflow and Infiltration (I/I)?

Inflow is water that enters the City's wastewater collection system at points of direct connection

Infiltration is water that flows through the ground that can seep, trickle, or flow into the wastewater collection system through cracks in sewer mains and/or private sewer laterals



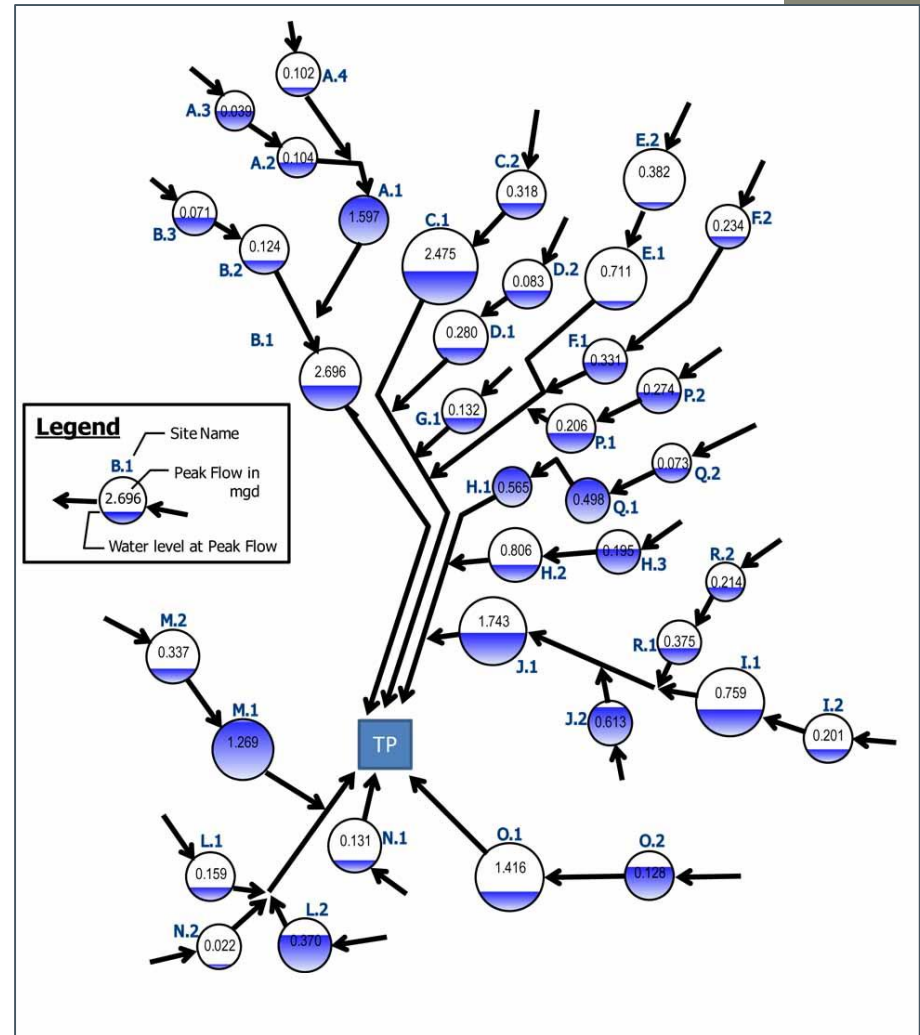
Past Studies and Programs

- Studies in the 1990's (where the City conducted private lateral inspections and smoke testing)
- Private sewer laterals identified as a major contributor of I&I
- Voluntary program contributed funding toward replacement of about 1,000 bad residential laterals
- Along with mainline CIP significantly reduced overflows and stoppages



III - Recent Studies

- *Sanitary Sewer Flow Monitoring and Inflow / Infiltration Study completed in 2012*
- *Wastewater Collection System Infrastructure Renewal Strategy completed in 2016*



Settlement Agreement

- In October 2015, California River Watch provided the City with a Notice of Violation and Intent to File Suit under the Clean Water Act
- City entered into Settlement Agreement with California River Watch on July 7, 2016. Provisions of the Settlement Agreement included:
 - Collection System Investigation And Repair
 - Collection System Overflow Response And Reporting
 - Providing a link to the California Integrated Water Quality System Sanitary Sewer Overflow website on the City's website
 - WRRF Improvements and Completion of Time Schedule Order Tasks
 - Supplemental Environmental Project, which included the Lateral Inspection and Repair Program, which It stated:

“City staff shall recommend to the City Council an ordinance establishing a program for the inspection, repair, and/or replacement of private sewer laterals.”



2016-17 Private Sewer Lateral Ordinance

October 2016

Study Session where the City Council supported:

- 1) Accelerated I/I reduction approach
- 2) “Private Sewer Lateral Offset” concept for new or intensified development in capacity constrained areas
- 3) Less than 100 percent permit cost recovery

May 2017

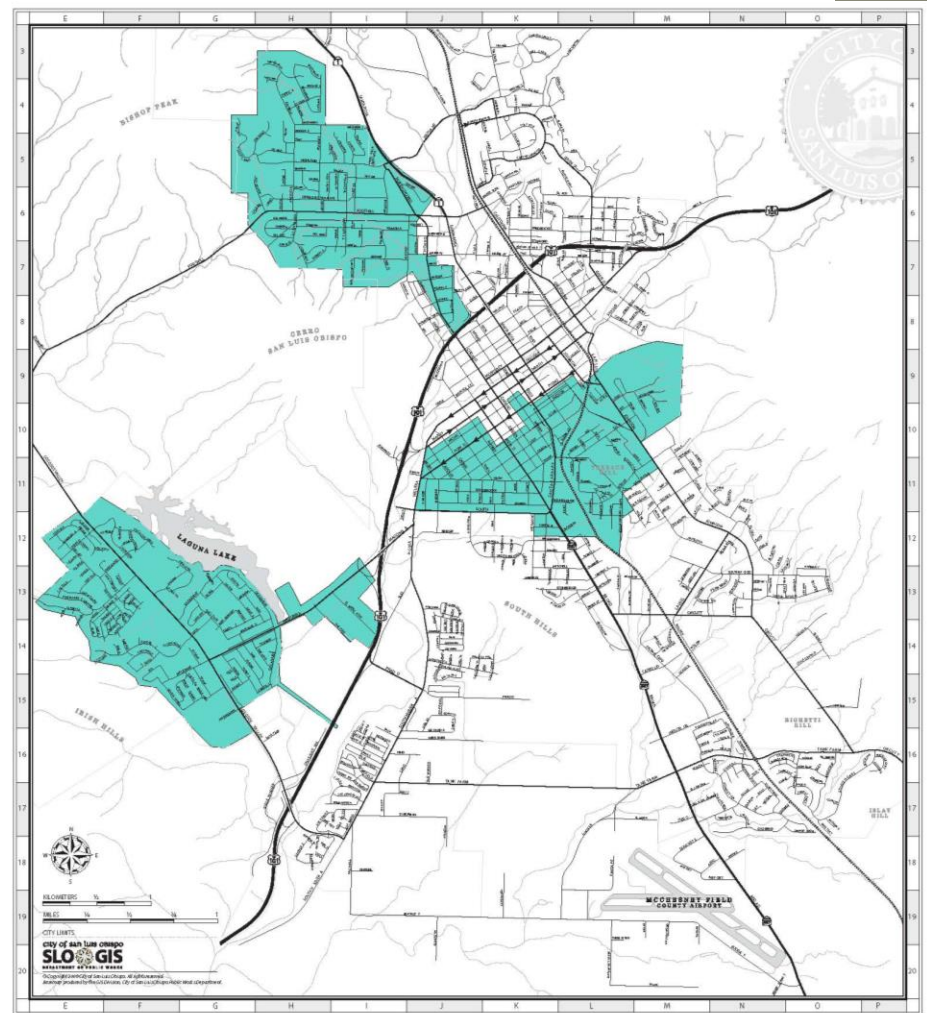
Presented Draft Ordinance to City Council in compliance with the Settlement Agreement. Ordinance was not approved.



Capacity Constraints

May 2018

Updated General Plan, Water and Wastewater Management Element in 2018 to include Capacity Constrained area within the City's Wastewater Collection System



Sanitary Sewer Overflows Continue

- One overflow in late January 2019 totaled 12,000 gallons and may result in fines



Recent Sanitary Sewer Overflows related to Inflow and Infiltration

Overflow Date	Overflow Location	Overflow Quantity (in gallons)
January 31, 2016	81 Broad	13,500
January 20, 2017	Broad and Murray	31,500
January 22, 2017	93 Broad	36,000
February 17, 2017	Ramona	3,500
February 21, 2017	Ramona	3,000
January 17, 2019	81 Broad	12,000
TOTAL:		99,500



Private Sewer Lateral Ordinance

Includes changes to Municipal Code Chapter 13.08 (Sewers), Article IX (Sewer Connection)

- Modification of existing Section 13.08.390(D), Maintenance of House Sewer Connections
- New Section on Private Sewer Laterals

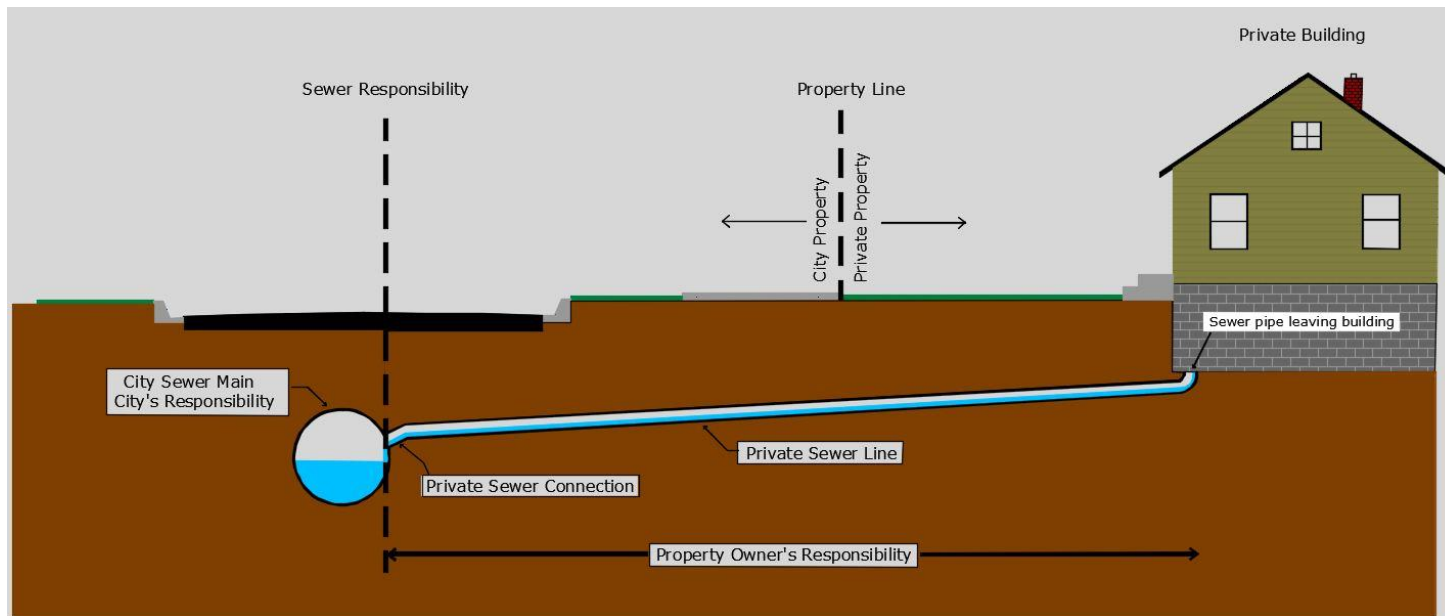
The screenshot displays the San Luis Obispo Municipal Code website. The header includes the city logo, the title "San Luis Obispo Municipal Code", a search bar, and navigation links for "LIVING", "VISITING", "GOVERNMENT", "DOING BUSINESS", "SERVICES", and "HOW DO I?". The main content area shows the "Contents" of Chapter 13.08 SEWERS, which is organized into several articles and sections. The sections listed are:

- Article I. General Provisions
 - 13.08.010 Purpose and policy.
 - 13.08.020 Definitions and abbreviations.
- Article II. General Sewer Use Requirements
 - 13.08.030 Stormwater and unpolluted drainage.
 - 13.08.040 Prohibited discharges.
 - 13.08.050 Federal categorical pretreatment standards—Applicability.
 - 13.08.060 Right of revision.
 - 13.08.070 Dilution.
- Article III. Pretreatment of Wastewater
 - 13.08.080 Pretreatment facilities.
 - 13.08.090 Grease, oil and sand interceptors.
 - 13.08.100 Accidental discharge—Stug discharge control plan.
 - 13.08.110 Prohibition of hauled wastewater.
- Article IV. Compliance Monitoring
 - 13.08.120 Control manhole.
 - 13.08.130 Measurements and tests.
 - 13.08.140 Powers and authority of inspectors.



Private Sewer Lateral Program Components

1. Rebate Program
2. Inspection Requirements
3. Offset Requirements



Sewer Lateral Rebates & Cost Recovery

Single Family Residential

- Rebates proposed for Capacity Constrained Areas (\$3,000 or up to 50% of cost)
- All Other Areas of the City (\$2,000 or up to 50% of cost)

Multi-Family Residential, Commercial, Etc.

Amount is restricted to \$999

Sewer Wye Installation Cost Recovery

The sewer wye installation fee is currently about \$530



2019 Private Sewer Lateral Ordinance

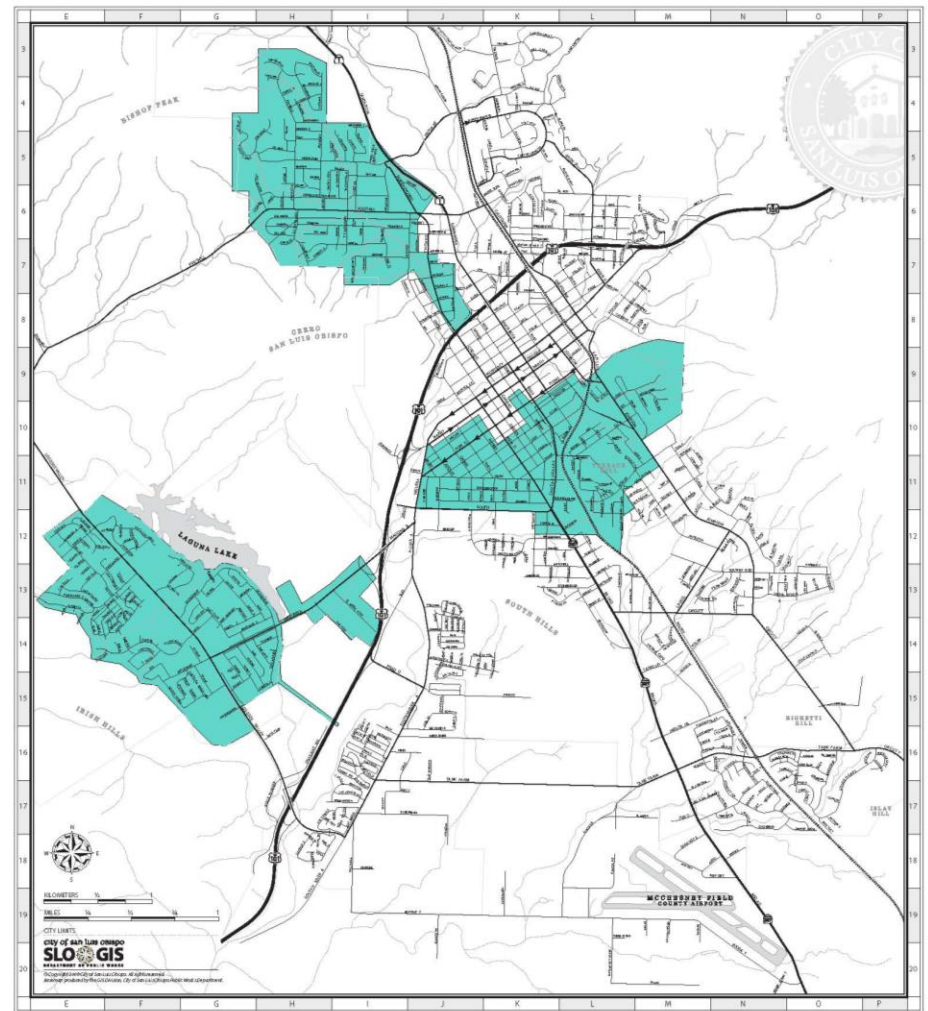
The following events are proposed to trigger an inspection:

- Building permit applications
- Change of use or subdivision of property
- Sanitary sewer overflow or upon notification indicating the presence of I/I
- ***Pending Sale of a Property***
 - *Inspection Report and Video submitted to City*
 - *Any repairs would be between the property's buyer and seller*



Offset Requirements

- Proposed to apply to new development in capacity constrained areas
- Flow calculation consistent with City's 2018 Engineering Standards
(Uniform Design Criteria, Section 7, Page 59)
- Flow offset by replacement of private sewer laterals, including any onsite lateral corrections
- 17 gallons of I&I reduction can be achieved per foot of private lateral replaced



Example of Offset Calculation

30	Proposed multi-family units
105	Wastewater generation in gallons per multi-family unit*
273	Peak flow (in gallons) per multi-family unit* (using a peaking factor of 2.6)
8,190	Peak flow (in gallons) to be offset by private sewer lateral replacement
479	Total feet of private sewer lateral to be replaced (at 17 gallons per foot)

* Wastewater generation and peaking factors are found in the City's 2018 Engineering Standards, Uniform Design Criteria, Section 7, Page 59.



Proposed Timeline

August 2019

Present Draft Private Sewer Lateral Inspection Requirements, Rebate Program, and Offset Requirements to City Council

August 2019

Private Sewer Lateral Rebate Program

Through December 2019

Public Engagement and Education on Private Sewer Lateral Inspection Requirements

January 1, 2020

Effective date for Inspection Requirements

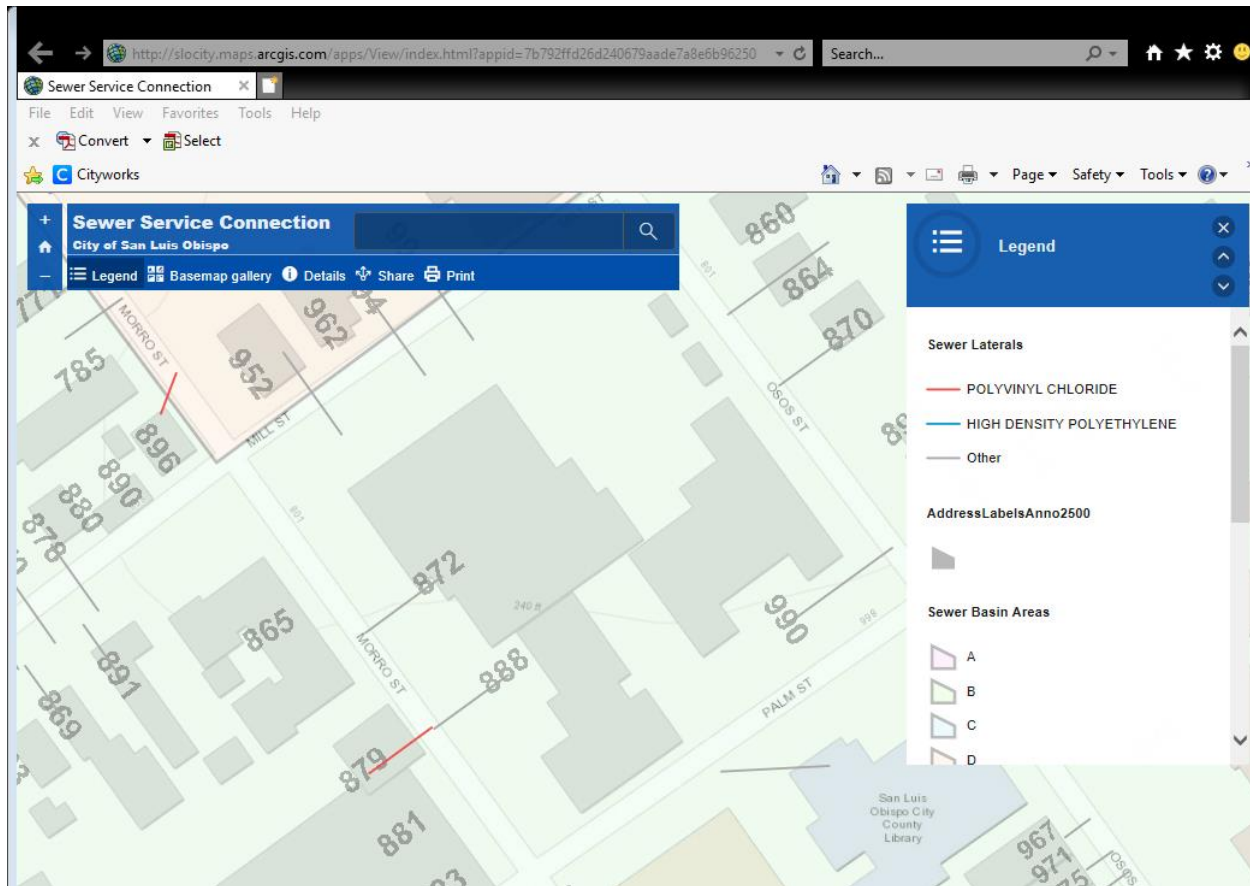


Public Outreach

- ✓ **Real Estate Community (Residential and Commercial)**
- ✓ **Home Inspectors**
- ✓ **Property Managers**
- ✓ **Internal Partners (City)**
- ✓ **Development Community**
- ✓ **Environmental Community**



Public Outreach Efforts



New Private Sewer Lateral Portal available at: www.slocity.org



Questions?

